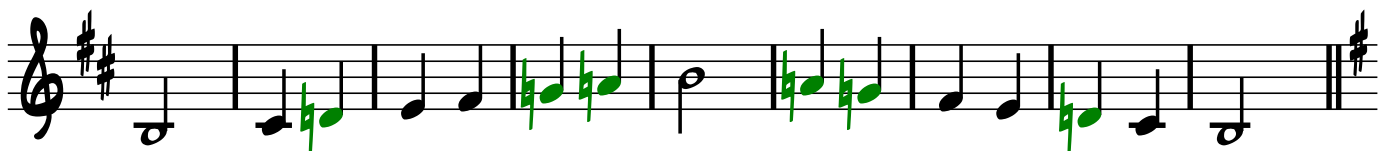
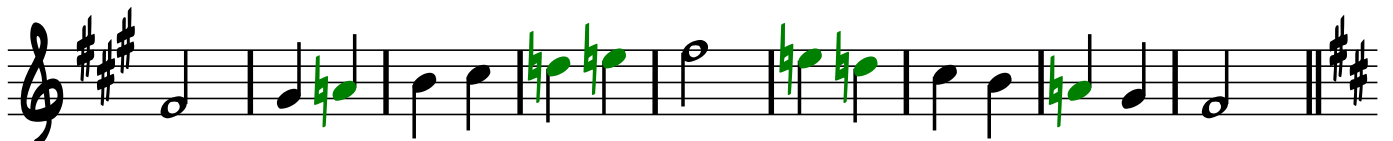
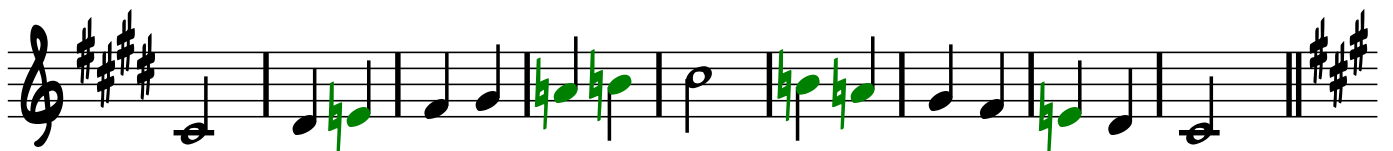
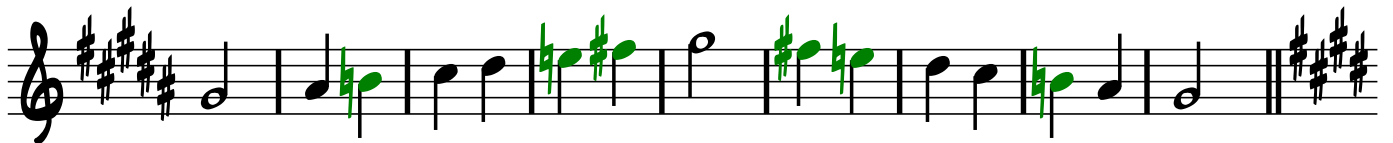
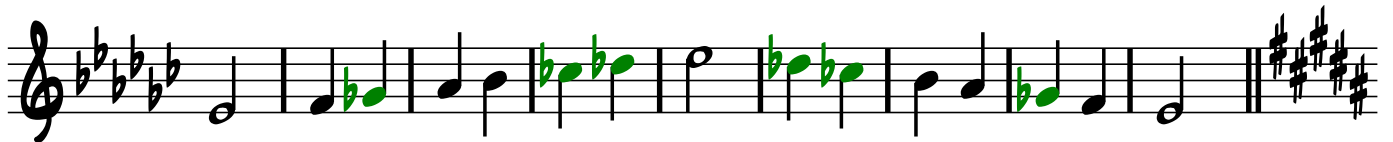
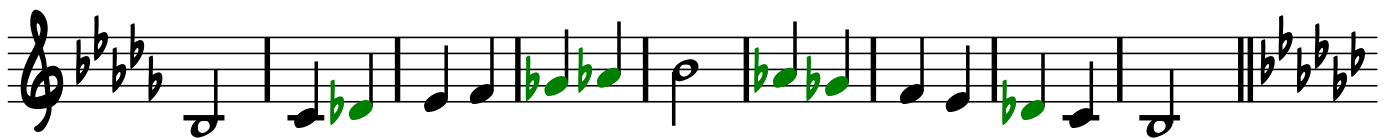
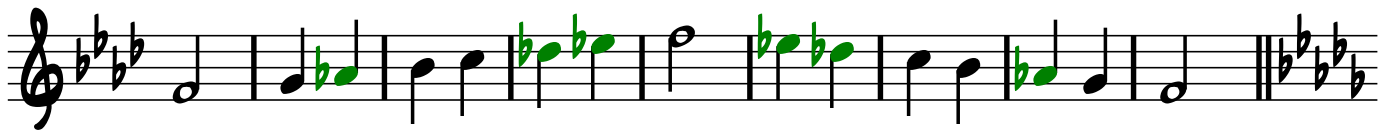


NATURAL MINOR SCALES IN A CIRCLE OF FOURTHS



The image displays five staves of musical notation in treble clef. The first staff is in G major (one sharp). The second staff is in G major (one sharp). The third staff is in F major (one flat). The fourth staff is in F major (one flat). The fifth staff is in F major (one flat). The notation includes quarter notes, eighth notes, and rests. Green highlights are placed on specific notes across all staves, indicating a particular melodic line or chord progression. The staves are separated by vertical bar lines, and each staff ends with a double bar line and repeat dots.